

Specifications P Series LK6P | LK8P | LK10P | LK12P

ELECTRIC

System Type	12 volt negative ground with circuit breaker protection
Battery	1000 AH, Maintenance Free
Alternator	85 A
Safety Start	Yes-gear and direction change
Lighting	Headlights, tail brake lights, reverse lights, and turn signals

TIRES

6P, 8P	16.9 x 24 10 Ply Tubeless
10P, 12P	16.9 x 24 12 Ply Tubeless

CAPACITIES

Fuel Tank	26 gal / 98.4 ltr
Hydraulic Tank	26 gal / 98.4 ltr

ENGINE

Model and Type	Perkins 1104D-44T 4-Cylinder Tier 3 (Stage IIIA) Turbo Diesel
Horsepower	99.9 bhp (74.5 kW) @ 2200 RPM
Torque	289.1 ft lbs (392 Nm) @ 1400 RPM
Displacement	268 cu. in. (4.4 Liters)
Bore/Stroke	4.134 in / 105 mm 5.0 in / 127 mm
Compression Ratio	16.2:1

TRANSMISSION

Type	Power-Shift, electric shift
Speeds	3 forward, 3 reverse
Drive	Full time 4WD

AXLES

Oscillation	10 degrees per side
Type	Heavy Duty final drive outboard planetary
Differential Lock	Electric, solenoid operated
Static Rating (Each)	40,000 lbs / 18,144 kg

STEERING

Type	Hydrostatic single cylinder
Steering Turns Lock To Lock	4
Steer pump pressure	1800 PSI / 124 Bar

HYDRAULIC SYSTEM

Pump Type	Gear
Flow Rating	25GPM @ 2200 RPM
Pressure Rating	2,500 PSI / 172 Bar

Mast Specifications

O.A.H.R.	MAST TYPE	O.A.H.L.	FREE LIFT (Optional)
144 in / 3,658 mm	2 Section	110 in / 2,794 mm	72 in / 1,829 mm
168 in / 4,267 mm	2 Section	127 in / 3,226 mm	84 in / 2,134 mm
168 in / 4,267 mm	3 Section	98 in / 2,489 mm	56 in / 1,422 mm
252 in / 6,400 mm	3 Section	122 in / 3,100 mm	84 in / 2,134 mm
336 in / 8,534 mm	3 Section	148 in / 3,759 mm	112 in / 2,845 mm
336 in / 8,534 mm	4 Section	122 in / 3,100 mm	84 in / 2,134 mm

STANDARD EQUIPMENT:

Heavy Duty Clearview Roller Mast with Dual Chains • Hydraulic Mast side shift • FOPS Operator compartment • Oil Cooled Submerged Disc Brakes • Manual dry-disc parking brake • Power Steering • Soft-shift Powershift Transmission • Limited Slip Differential • Tier 3 Turbo Diesel Engine • Headlights, tail lights, reverse lights, and turn signals with safety guards • External side view mirrors • Wide-grip Handrails • Extra wide steps • Electric Horn and automatic Backup alarm • Tilt steering column with anti-restart ignition and neutral safety interlock • Adjustable vinyl suspension seat with arm rests and retractable safety belt • Front fenders and rear fenders are extra thick steel for maximum safety and durability • Engine oil pressure gauge, fuel gauge, tachometer, hour meter, and warning lights • High-mount air intake • Operator, maintenance and illustrated parts manuals included • 1 Year 2000 hours limited warranty (2 year engine warranty)

OPTIONAL EQUIPMENT:

Various mast/carriage/fork types and sizes • Various engines • Bucket attachments • Lockable sliding engine hood, fuel and hydraulic caps • pre-cleaner • Powershift electronic transmission • High durability powder coat yellow paint with black trim • Adjustable height Strobe Light • Additional lighting • Auxiliary • DS Rated • Vinyl • Roll-up Door • Tinted Windows • Sunvisor • Power Assisted Brakes • Deadman seat • Safety-Start Seatbelt • Heated Mirrors • Cold Weather Package • 12V Outlet • Radio • Cupholders • Enclosed all weather operator compartment with HD heater, sliding windows, wipers, lift-off doors • ROPS Operator compartment • Air Conditioning • Air ride suspension seat with arm rests and retractable safety belt • Foam filled tires • Towing package • Frame level • Contact dealer for other options.

Manitex Lifting reserves the right to make changes in specifications shown, herein, and improvements, or discontinue manufacture at any time without notice or obligation. The information contained herein is general in nature and is not intended for specific application purposes.

7135 Islington Avenue, Woodbridge, Ontario, L4L 1V9
Tel: 905-265-3965 | Fax: 905-851-6396

www.manitexlifting.com



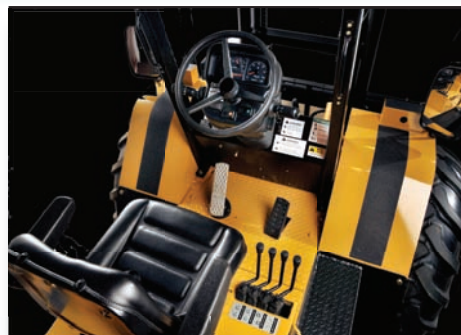
CONSTRUCTION FORKLIFTS

Let Us Do The Heavy Lifting

If your success depends on the efficient and effective lifting of heavy loads on any job site then, you can count on the complete line of Manitex Liftking forklifts to perform above and beyond the call of any construction project. Manitex Liftking has more than 40 years of expertise in designing, developing and manufacturing materials handling equipment to withstand the toughest conditions.

New Cab Design

- General redesign focused on improved ergonomics
- 30% more glass provides better visibility in all directions
- Door width enlarged by 20% offering easier entrance/exit
- Spacious operator compartment is now 25% wider



SPACIOUS OPERATOR COMPARTMENT: Ergonomically designed with 360-degree visibility. Optional all weather closed cab with sound insulation, defroster fan, heavy-duty heater, ergonomic controls, sliding windows, and removable doors.



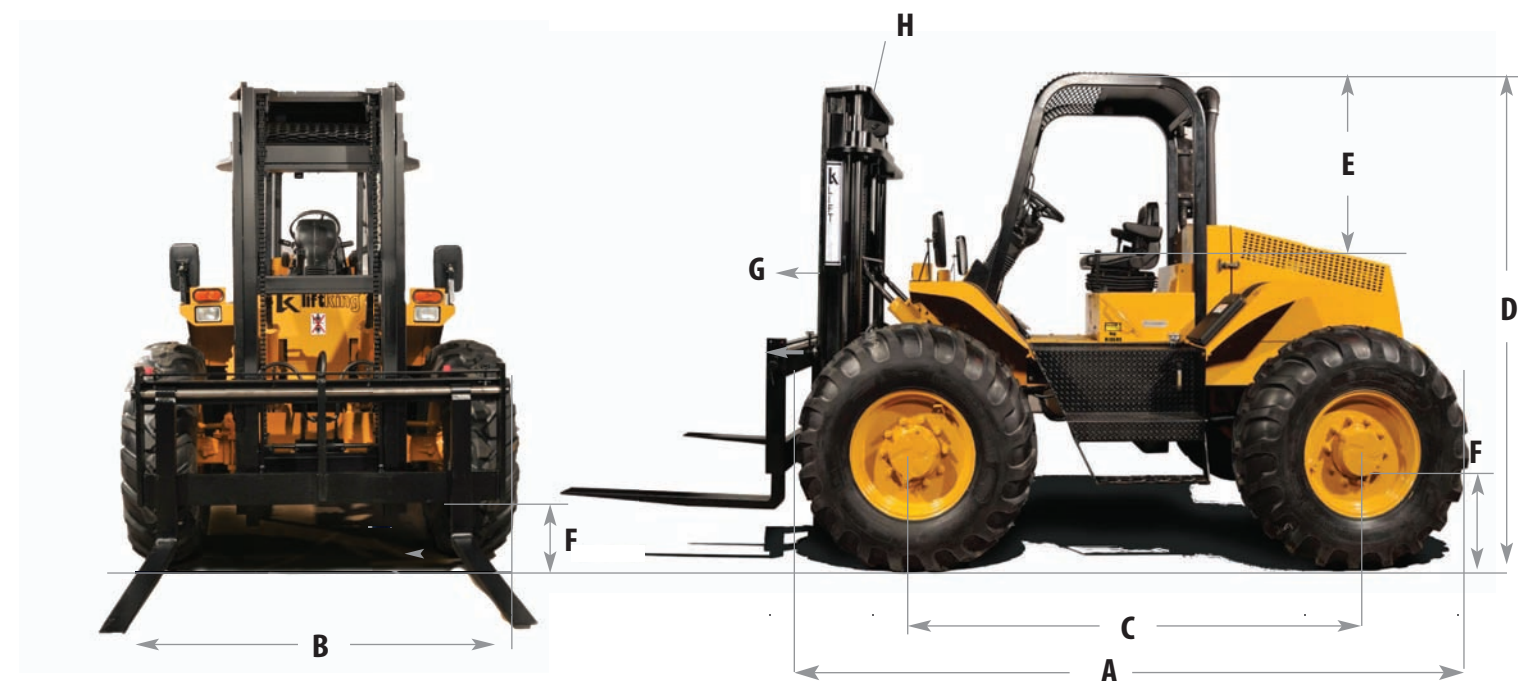
PROTECTION: Fully enclosed and protected electric and hydraulic systems.



ENGINE: The P Series forklifts have a sliding hood for easy access during maintenance, and house a Perkins Turbo Tier 3 emissions compliant diesel engine.



STEERING CONTROL: Tight turning radius with exceptional ground clearance.



	Ref	LK6P	LK8P	LK10P	LK12P
Lift capacities @ 24 inch load centre		6,000 lbs / 2,721kg	8,000 lbs / 3,628kg	10,000 lbs / 4,545 kg	12,000 lbs / 5,454kg
Overall length (without forks)	A	155 in / 3,937mm	158 in / 4,013 mm	161 in / 4089 mm	174 in / 4,419 mm
Overall width	B	88 in / 2,235 mm	88 in / 2,235 mm	88 in / 2,235 mm	96 in / 2,438 mm
Wheelbase	C	94 in / 2,388 mm	94 in / 2,388 mm	94 in / 2,388 mm	94 in / 2,387 mm
Height to top of overhead guard	D	110 in / 2,794 mm	110 in / 2,794 mm	110 in / 2,794 mm	111 in / 2,819 mm
Distance from seat to overhead guard	E	39 in / 990 mm	39 in / 990 mm	39 in / 990 mm	39 in / 990 mm
Ground Clearance	F	12 in / 305 mm	12 in / 305 mm	12 in / 305 mm	12 in / 305 mm
Mast Tilt - Forward	G	38°	38°	38°	38°
Mast Tilt - Rearward	H	10°	10°	10°	10°
Track Front & Rear		70.5 in / 1,791 mm	70.5 in / 1,791 mm	70.5 in / 1,791 mm	79.25 in / 2,013 mm
Turning Radius		15 ft / 4.572 m	15 ft / 4.572 m	15 ft / 4.572 m	15 ft / 4.572 m
Weight		13,520 lb / 6,132.5 kg	15,000 lbs / 6,818 kg	17,260 lbs / 7,829 kg	18,280 lbs / 8,309 kg
Travel speed		19 mph / 30 kph	19 mph / 30 kph	19 mph / 30 kph	19 mph / 30 kph
Grade ability		25%	25%	25%	25%